



CECL

Environmental and
Engineering Consulting

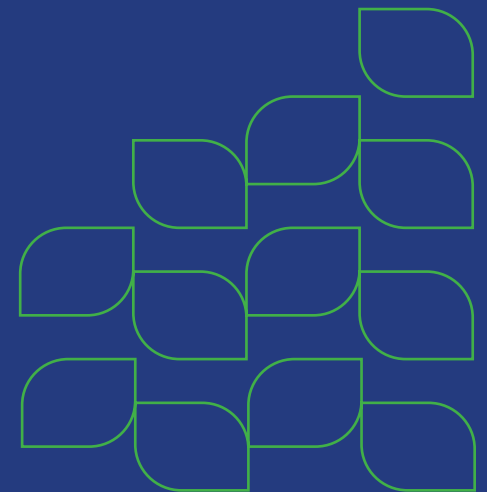
**Environmental Solutions &
Engineering Excellence**

.....
City Engineering Company Limited



+ Contents

Message from the CEO	1
Introduction	2
Our Vision.....	3
Our Mission	3
Our Core Values	3
Company Services	4
Engineering Services.....	5
Environmental Services	11
Project Execution Set-Up	27
Project Execution Structure.....	27
Organogram	28
The Team	29
Project Portfolio.....	35
Local and International Partners.....	39
Our Clients	40



+ Message From The CEO

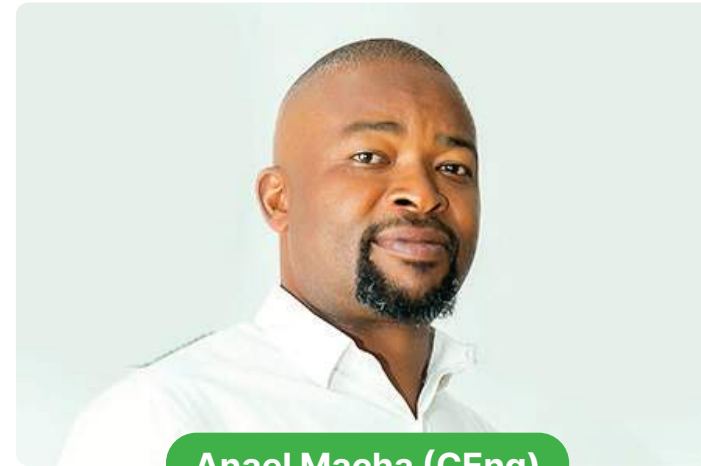
I founded City Engineering Co Ltd (CECL) in 2013, In 2023 we celebrated our 10th anniversary of becoming an epitome of engineering and environmental prowess. CECL is now recognized as the go-to Tanzanian firm that adopts cutting-edge technology for sustainably designing, constructing, and managing diverse environmental and civil engineering projects in alignment with both local regulations and international best industry practices.

It is noteworthy that for such a young company to thrive during the pandemic that presented to the world unprecedented challenges has proven what a strong foundation we stand on.

As Tanzania's first local company to successfully complete the Golden Pride Mine closure, we've proven that local expertise can deliver world-class environmental solutions.

At CECL, we are constantly working on ensuring that our success lies not just in accomplishments but in the transformative impact on industries and communities alike. On the later, we understand that we have a responsibility to local beneficiation this includes investing in our greatest asset – our people. The establishment of a Training and Development Unit, a Leadership and Management Program, and a Human Resource Unit have strengthened the team to do more. We have so far proudly extended to nurturing a skilled workforce for the future through initiatives such as mentorship, career development programs, and our recently launched two-year training and development program.

We envision to expand operations to other neighboring countries and beyond to become a regional player. We have



Anael Macha (CEng)

started this journey by developing regional partnerships and acquiring new clients.

All this would have not been without our valued clients and esteemed partners, to whom I express my heartfelt gratitude. Your unwavering trust is the cornerstone of our success, both realized and planned.

The incredible CECL team has played a key role to ensure CECL is not just a company but a community of visionaries creating a future where growth knows no bounds, impact resonates, and careers flourish with purpose. Together we are working to achieve greater heights.

Thank you all for being an integral part of the CECL story so far and for staying on board for a greater future.

Warm regards,
Anael A. Macha CEng, APP
Chief Executive Officer

+ Introduction

City Engineering Co Ltd (CECL) incorporated in the United Republic of Tanzania with certificate of incorporation No 50109. CECL provides engineering and environmental consulting services, the company owned and managed 100% by Indigenous Tanzanians. It is registered by the Engineers Registration Board (ERB) as Consulting firm in the field of Environmental Engineering (Reg No. 233) and the National Environment Management Council (NEMC) as Consulting firm on Environmental Services (NEMC/ EIA/0032 and NEMC/EA/0012), and the individual Engineers have been registered as the Approved professional Persons

(APP) at the Department of Water Resources in the Ministry of Water.

CECL is also a member of the Tanzania Chamber of Mines (TCM), the American Chamber of Commerce in Tanzania (AMCHAM), and a signatory of the UN Global Compact Initiative.





Our Core Values

Quality

We maintain the highest standards to exceed expectations.

Teamwork

We work together towards common goals

Innovation

We are open to trying new ways and ideas to improve results.

Integrity

We follow principles and do what is right even when it is difficult.

Personal Growth

We are continually growing to become the best versions of ourselves.



Our Vision

We envision a sustainable world through engineering and design excellence.

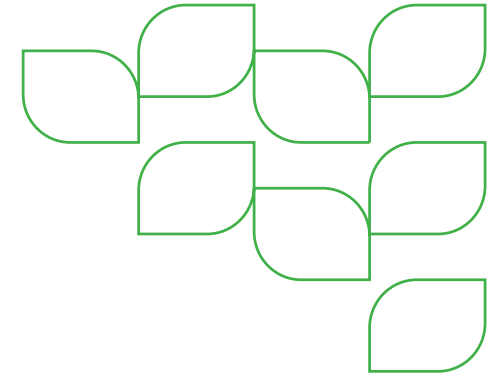


Our Mission

Advancing society through environmental engineering and commitment to quality.

+ **Company Services**

Our company specializes in delivering top-tier solutions across three key areas: Engineering Services, Environmental Services, and Environmental Systems.



Engineering Services



We provide innovative engineering solutions, with niche computer programs such as Surpac, ArcGIS, Rift TD, GeoStudio, Slide2, AutoCAD Civil 3d, WMS and GMS/FEFLOW that assist us to delivery outstanding works to our clients.

Environmental Services



We provide comprehensive Environmental Services that help businesses meet regulatory requirements and protect the environment. We can take assessments and prepare all documentation required for permits, licenses, notifications and statutory approvals.





Engineering Services

We excel in delivering innovative engineering services while maintaining the highest standards of safety, efficiency and reliability. We take pride in our mastery of:

> Ground Investigation

Our Geosciences Solutions are tailored to meet the diverse needs of our clients while ensuring sustainable development and environmental stewardship. They encompass a comprehensive range of services aimed at understanding and managing geological and environmental factors. We utilize advanced methodologies to provide strategic insights for informed decision-making.

- + Geotechnical Investigation
- + Geophysical Surveys
- + Hydrogeological Studies
- + Seismic Hazard Analysis
- + Geochemical Analysis
- + Geological Surveys



>> Ground Investigation



> Water Resources and Environmental Modeling

At CECL we take pride in our mastery of designing and implementing water supply and management infrastructure. We strive to support our clients to safeguard water resources for the people and for the environment.

- + Water Resources Development and Management
- + Water Supply and Sewerage Systems
- + Hydrological and Hydraulic Solutions
- + Agricultural and irrigation systems



>> Surface Water Management



> Engineering Design and Permitting

Our Engineering Designs and Management services are dedicated to providing innovative solutions for complex engineering projects. Over the years we have proven our proficiency in the listed areas, ensuring the safety and sustainability of infrastructure projects as per national and international standards.

- + Tailings Storage Facility (TSF) Design
- + Water Dam Design
- + Rock Waste Dump (RWD Design)
- + Road Design
- + TSF And Water Dam Management
- + Dam Risk Assessments
- + Dam Structure Inspections and Audits
- + Dam Liner Installation and Testing



Water Dam Design



> Construction Management and Supervision

We offer comprehensive Construction Management and Supervision services to ensure the successful implementation of engineering projects. We deliver on the area of focus in alignment with resource allocation and adherence to project timelines. With a commitment to excellence and safety, we manage construction projects with precision and efficiency, delivering desired results as per national and international standards.

- + Tailings Storage Facility (TSF) & Water Dam Construction
- + Mine Closure
- + Mine Plant Construction
- + Road Construction
- + Water Management and Erosion Control
- + Route Surveys (Roads, Pipelines, Transmission Lines)
- + Boundary/Property Surveys



TSF and Water Dam Construction



> Dam Instrumentation and Monitoring

We offer comprehensive instrumentation solutions. Our expertise lies in Dam instrumentation to monitor structural integrity and water management ensuring reliable data collection and analysis. We are devoted to support our clients in making informed decisions and ensuring the success of their projects.

- + Piezometer installation (Vibrating Wire, Standpipe)
- + Survey Monuments
- + Air Quality Measurement, Monitoring, and Dispersion Modeling
- + Automatic Weather Stations



Instrumentation and Monitoring



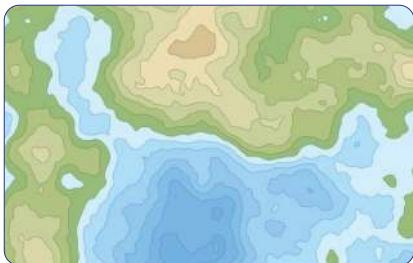
> Surveying Solutions

We offer precise and reliable data collection services for various projects. We are known for our proficiency in capturing accurate spatial information. Our Surveying Solutions ensure meticulous attention to detail and deliver actionable insights for project planning and management.

- + Bathymetric Surveys
- + Topographic Surveys
- + Aerial Surveys (Drone-based)
- + Construction Staking/Site layout
- + Route Surveys (Roads, Pipelines, Transmission Lines)
- + Boundary/Property Surveys



Groundwater Investigation and Modelling





Environmental Services

Our environmental solutions are tailored to meet the unique needs of every project. Our team of expert environmental engineers brings combined experience to every project, transforming complex challenges into sustainable solutions. We have extensive experience in:

> Environmental and Social Due Diligence

CECL conducts meticulous due diligence assessments, leveraging our expertise to identify potential environmental and social risks and regulatory compliance issues. Our comprehensive approach ensures that clients are equipped with the necessary information to make informed decisions regarding their projects. By thoroughly evaluating environmental factors and legal requirements, we mitigate risks and safeguard our client's interests throughout the project lifecycle. With CECL's due diligence services, clients can proceed confidently, knowing they have a thorough understanding of the environmental landscape and are well-prepared to navigate regulatory challenges.



Environmental and Social Due Diligence



> **Baseline Studies**

CECL specializes in conducting comprehensive baseline studies, laying the foundation for informed decision-making and sustainable project development. Our strength lies in our state-of-the-art techniques to assess environmental conditions and potential impacts. By establishing a thorough understanding of baseline environmental factors, we help clients identify potential risks and opportunities early in the project lifecycle. With CECL's baseline studies, clients can confidently implement their projects, knowing they have a solid foundation.

- + Air Quality Assessment
- + Acoustic and vibration Assessment
- + Fauna Surveys
- + Flora surveys
- + Archeology and cultural heritage



Ecological Flora & Fauna surveys



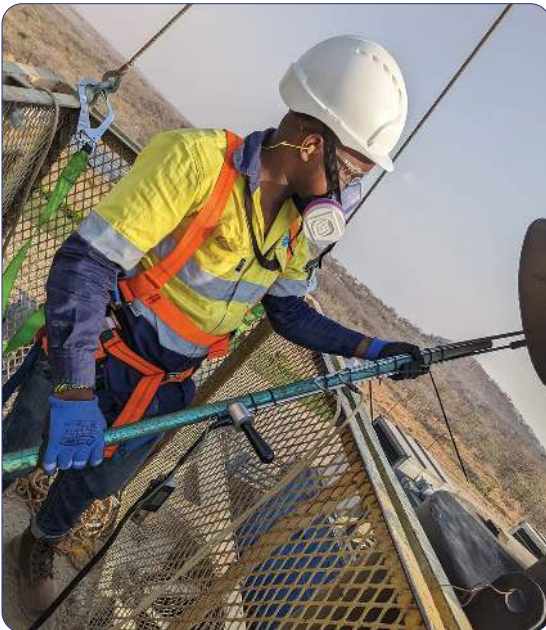
> Legal Register Development

We are committed to assisting our clients in developing robust legal registers and fulfilling regulatory obligations, ensuring compliance with environmental laws

and standards. Our experienced team conducts thorough reviews of applicable regulations and requirements, helping clients navigate complex legal landscapes with confidence. By identifying and addressing regulatory gaps, we help clients mitigate legal risks and avoid costly compliance issues. We give our clients an opportunity to focus on achieving their environmental objectives.



Environmental and Social Legal Compliance



> Stakeholders Engagement

At CECL, we recognize the importance of meaningful stakeholder engagement in driving successful project outcomes. Our team employs a collaborative approach to stakeholder engagement, facilitating transparent communication and fostering positive relationships with all parties involved. By actively involving stakeholders throughout the project lifecycle, we ensure that their concerns are addressed, and their perspectives are integrated into decision-making processes. With CECL's stakeholder engagement services, clients can build trust, enhance project acceptance, and achieve sustainable outcomes that benefit both their organizations and the communities they serve.



Stakeholder Engagement



> Impact Register Development

We have a remarkable track record in developing comprehensive impact registers to systematically assess and manage environmental and social impacts throughout the project lifecycle. We work closely with our clients to identify potential impacts associated with their projects, from construction activities to operational phases. By documenting and prioritising these impacts, we help clients develop proactive mitigation measures and ensure compliance with regulatory requirements.



Post Site Closure Monitoring and site Relinquishment



> Environmental & Social Impact Identification And Assessment

We are among the leaders in Environmental & Social Impact Identification and Assessment, ensuring comprehensive evaluation of project impacts on both natural and human environments.

Our multidisciplinary team employs robust methodologies to identify potential environmental and social risks associated with project activities. By conducting thorough assessments and stakeholder consultations, we provide clients with valuable insights as per national and international standards to inform decision-making and mitigate adverse impacts.



Environmental Incidence Investigation and Monitoring



> Resettlement Action Plan and Livelihood Restoration

At CECL, we develop Resettlement Action Plans (RAPs) based on the International Finance Corporation (IFC) standards and World Bank guidelines to minimize social disruptions and restore livelihoods affected by projects. Our team collaborates with affected communities to understand their needs and aspirations, designing customized RAPs that prioritize social equity and well-being. By implementing livelihood restoration programs and community development initiatives aligned with international best practices, we help clients mitigate social risks and enhance project acceptance.



Surveying



Construction Supervision



Dam Instrumentation and Monitoring

> Climate Resilience and Mitigation Planning

Our experience in developing Climate Resilience and Mitigation Plans to address climate change impacts, including the transition to renewable energy sources speaks for itself. Our team conducts vulnerability assessments and risk analyses to identify climate-related hazards and vulnerabilities, while also evaluating opportunities for energy transition and greenhouse gas reduction. By integrating adaptation and mitigation strategies into project planning and design, we help clients build resilience to climate change and promote sustainable energy. With CECL's Climate Resilience and Mitigation Planning services, clients can adapt to changing climate conditions, reduce their carbon footprint, and contribute to global efforts to combat climate change practices.



Construction Supervision and Management



> Environmental and Social Management Plan

CECL develops comprehensive Environmental and Social Management Plans (ESMPs) to address environmental and social risks throughout the project lifecycle. We work support our clients to identify potential impacts and develop mitigation measures that comply with regulatory requirements and international best practices. By implementing monitoring and reporting mechanisms, we ensure effective implementation of the ESMP and continuous improvement in environmental and social performance.



Environmental and Social Impact Identification and Assessment



> Environmental Permitting and Compliance

Our environmental management, permitting, and compliance services are designed to meet the diverse needs of our clients. We specialize in developing and maintaining integrated and discipline-customized programs for environmental, health, and safety compliance, adding tangible value to businesses. Our experienced team assists clients in securing and maintaining the necessary environmental permits to comply with complex regulatory requirements at the local, state, and federal levels. Our commitment to providing technical and business solutions that ensure our clients' environmental compliance obligations are met is unmatched.



Environmental Permitting and Compliance



> Environmental Monitoring

We have experience and expertise in providing comprehensive Environmental Monitoring services to assess and track various environmental parameters crucial for sustainable development and regulatory compliance.

- + Air Quality
- + Water Quality
- + Biodiversity
- + Weather Monitoring



Installation & calibration of Weather Station



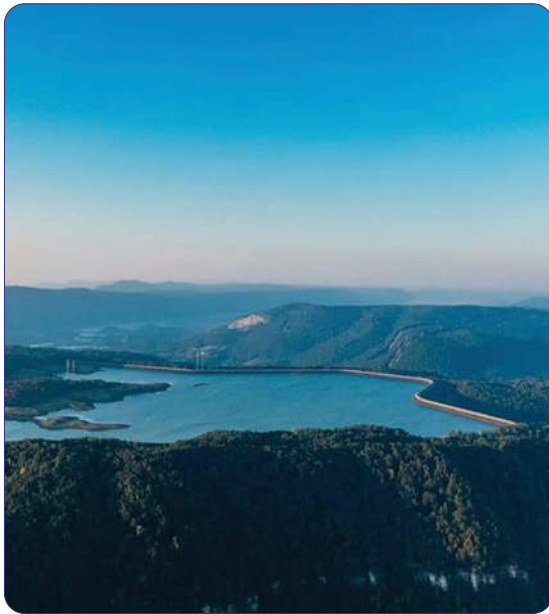
Environmental Monitoring



Baseline studies

> Post-Site Closure Monitoring and Site Relinquishment

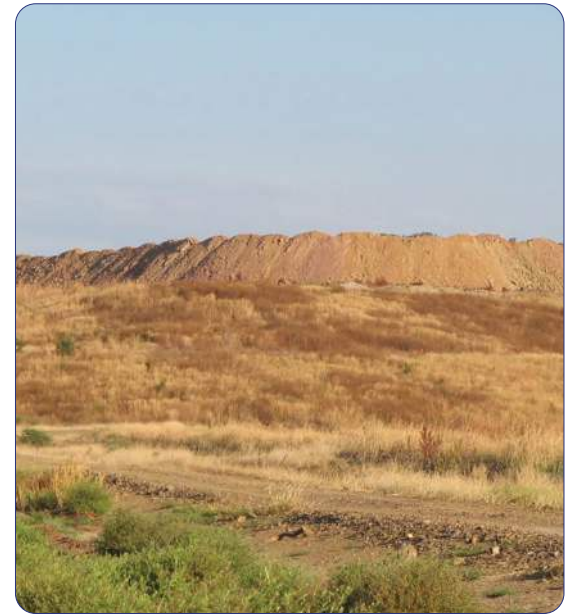
We are known for our proven capability to implement Post-Site Closure Monitoring and guidance for responsible site relinquishment, minimizing long-term environmental liabilities. We implement monitoring programs to track environmental indicators and assess the effectiveness of remediation efforts post-closure. By ensuring regulatory compliance and conducting thorough site assessments, we help clients mitigate risks and achieve successful site relinquishment outcomes. With CECL's Post-Site Closure Monitoring and Site Relinquishment services, clients can confidently transition sites to their next phase while safeguarding environmental integrity.



Water Dam design



Air Quality assessment



Post Site Closure Monitoring and site Relinquishment

> Environmental Incident Investigation

At CECL, we conduct Environmental Incident Investigations to identify root causes and implement corrective actions, preventing recurrence and minimizing environmental impacts. Our experienced team utilizes forensic techniques and regulatory expertise to assess incidents, analyze data, and develop mitigation strategies. By working closely with regulatory agencies and stakeholders, we ensure transparent communication and timely resolution of environmental incidents. Through our services, our clients are able to mitigate reputational risks and demonstrate their commitment to environmental stewardship and compliance.



Surveying



Geotechnical Investigation



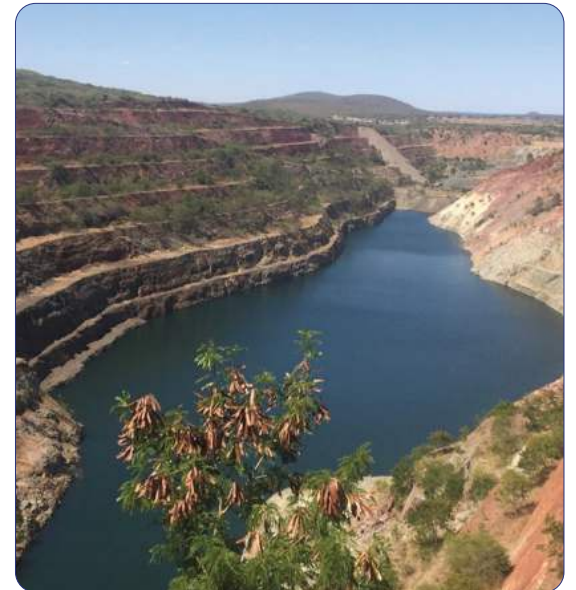
Construction Supervision and Management

> Contaminated Site Remediation

Our expertise lies in Contaminated Site Remediation, restoring environmental quality and mitigating risks to human health and ecosystems. We employ innovative remediation technologies and best practices to address soil and groundwater contamination effectively. Our role is to ensure safe and sustainable restoration of contaminated sites by developing customized remediation strategies and implementing site-specific solutions. By doing so, we enable our clients to mitigate liabilities, achieve regulatory closure, and protect public health and the environment for future generations.



Construction Supervision and Management



> Site Closure Plan Development

We work closely with our clients to develop comprehensive plans that address environmental risks and obligations. By integrating stakeholder input and regulatory requirements, we facilitate smooth transitions from project operations to closure and beyond. We guarantee to provide plans that enable our clients to navigate complex regulatory landscapes and achieve responsible closure outcomes that meet environmental objectives and stakeholder expectations.



Ground Investigation

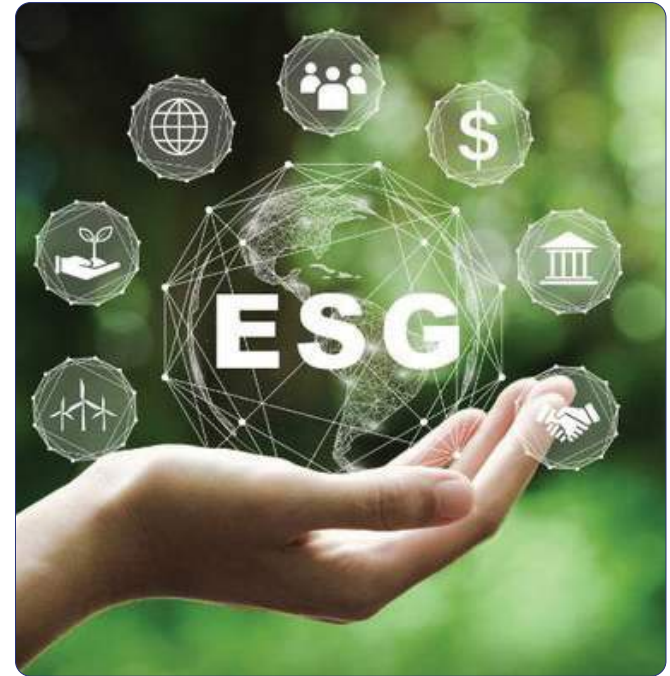


> ESG Consulting Services

Our Environmental, Social, and Governance (ESG) consulting services helps clients integrate sustainability principles into their business practices and operations.

We collaborate with our clients to assess their current ESG performance and develop tailored strategies to enhance environmental stewardship, social responsibility, and corporate governance. We provide guidance on sustainability reporting frameworks, stakeholder engagement strategies, and ESG risk management practices to drive long-term value creation and stakeholder trust.

By aligning with internationally recognized ESG standards and best practices, such as the Global Reporting Initiative (GRI) and the Task Force on Climate-related Financial Disclosures (TCFD), CECL empowers clients to effectively manage ESG risks and opportunities, enhance their brand reputation, and achieve sustainable business growth. We believe in working together to demonstrate our client's commitment to responsible business best industry practices.



Contaminated site remediation



Stack Emission Monitoring



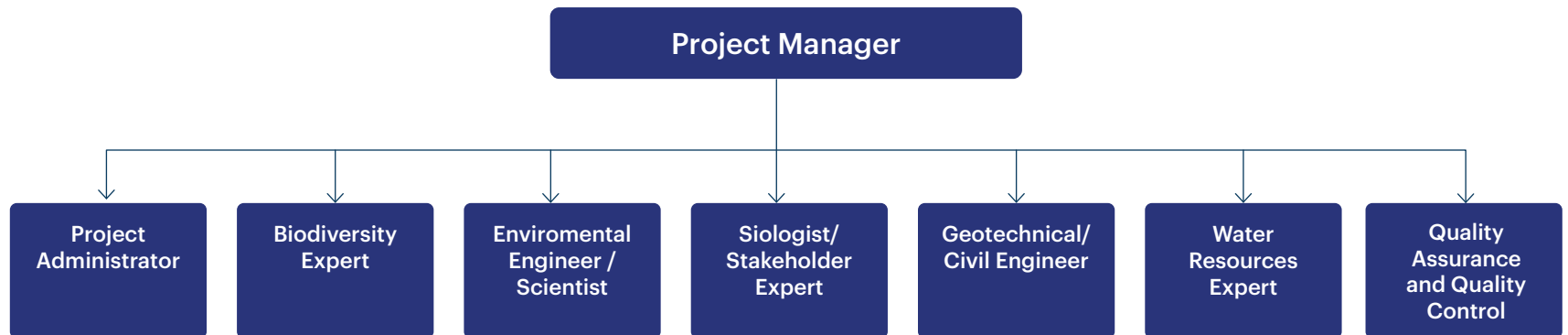
Tailing Storage Facility (TSF) Design

+ Project Execution Set-Up

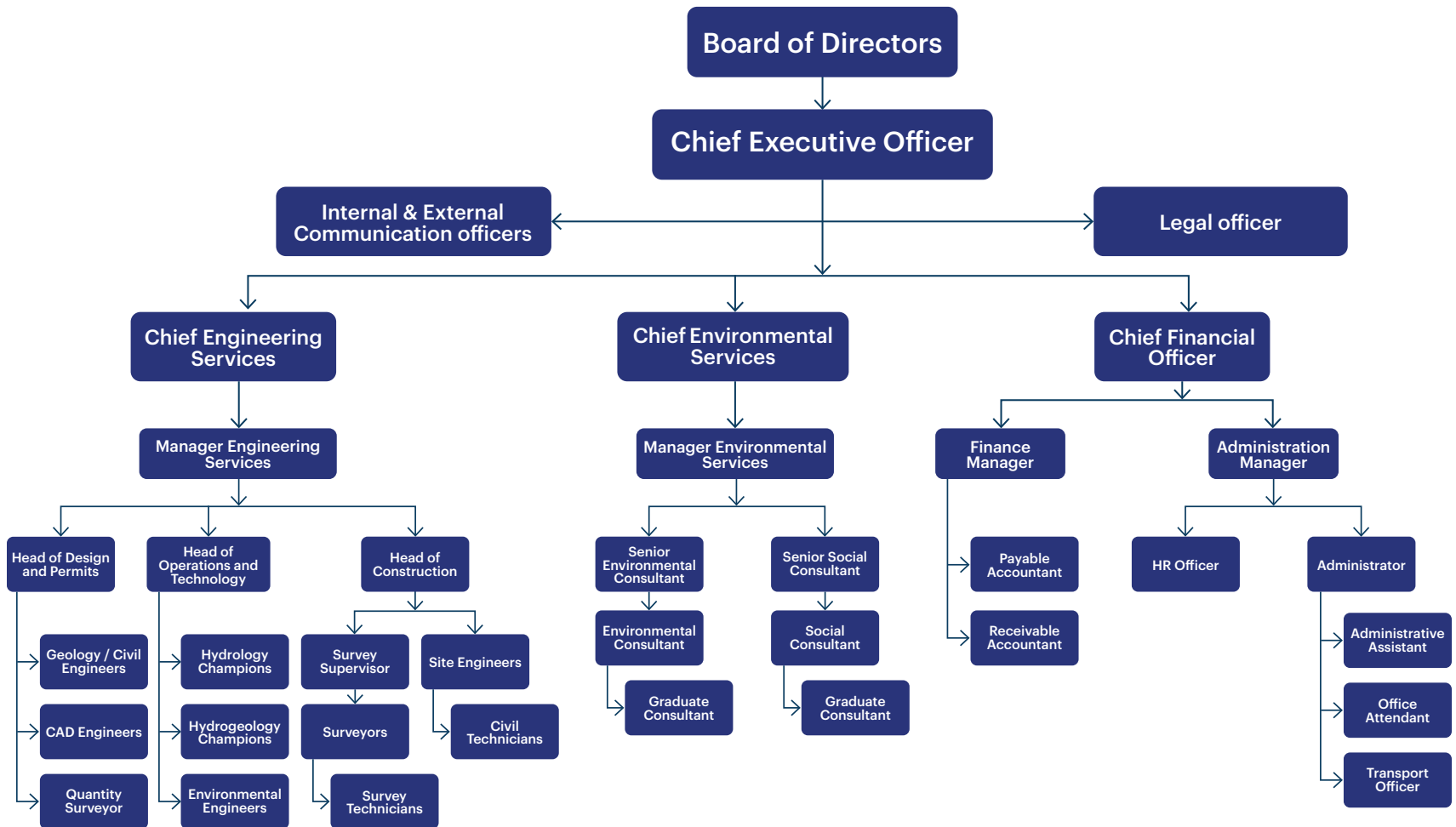
Once CECL is awarded a project, it sets-up a project team made up of different experts as per scope of work.



> Project Execution Structure



+ Organogram



Each project is led by the project managers supported by individual experts required for each specific project such as engineers, environment quality, sociology, quantity surveyors, GIS and Survey experts, legal, quality control and assurance (QAQC), and administrator.

+ The Team

Our team members are the driving force behind our achievements and the visionaries shaping our future. Here is a look at our core team. Professional portfolios will be shared on demand.



Anael Macha (CEng)
Chief Executive Officer

Email: anael@cityengineering.co.tz

Anael Macha serves as the Founder and Chief Executive Officer of City Engineering Co Ltd. He brings over two decades of expertise in environmental and engineering projects related to natural resource extraction and World Bank or donor-funded initiatives.

His proficiency spans various areas, including mine waste facilities design and construction supervision, operations management, environmental and social baselines, stakeholder and community engagements, environmental management plans, facility inspections, and audits.

Anael is a Consulting Engineer registered with the Tanzanian Engineers Registration Board and an Approved Professional Person (APP) for Tailings Storage Facilities and Water Dams by the Ministry of Water in Tanzania and the National Environment Management Council (NEMC).

Anael has participated in the development and implementation of the first mine closure plan in Tanzania and the East Africa region, specifically for the closure of the Golden Pride project owned and managed by Resolute Mining Ltd of Australia. He was also involved in developing the Community Engagement Guideline for PPP Projects in Tanzania under the World Bank.



Eng. Elisa Kiwelu - Ag Chief Operation Officer (Engineering services)
Chief Engineering Services

Email: elisa@cityengineering.co.tz

Elisa Kiwelu holds a Bachelor of Science in Environmental Engineering from the University of Dar es Salaam. With 6 years of experience in designing TSF and water dams and 12 years of expertise in water resources and environmental modeling, he has actively participated in numerous research and consultancy projects. His portfolio includes feasibility studies, detailed engineering design, construction supervision, and monitoring and evaluation. Elisa is proficient in using cutting-edge analytical, data processing, and decision support tools across various disciplines. These tools encompass common office applications (Microsoft Office suite), GIS and Remote Sensing software, as well as models for hydraulic, surface and groundwater, industrial and municipal wastewater, air quality, river basin, and floodplain analysis (e.g., ArcGIS, ERDAS, Surpac, Surfer, Strater, Hydro GeoAnalyst, AQETSOLV, AquaChem, WaterGEMS, SewerGEMS, SOBEK, SWAT, WMS, RIFT TD, GMS, ADMS, FEFLOW, WEST). Additionally, he is skilled in engineering design and drafting software (Plaxis LE/2D, Deswik CAD, Micromine) and proficient in system optimization, computer programming, and applications development tools (Matlab Simulink, Visual Basic, FORTRAN).



Mr. Augustino Pius
Ag. Chief Financial Officer

Email: augustino@cityengineering.co.tz

Augustino Pius, as our CFO brings a good experience to his role that aggregated over a decade of Accounting and Administration experience to lead our Finance and Administration Department with a focus on excellence, financial integrity, and compliance.

Prior to joining City Engineering after completion of his Bachelor Degree in Business Administration majoring in Accounting and Finance from St. Augustine University, Augustino held various finance roles in private sector institutions; Saccos, Higher Education Institution and Tourism Industry.

As a CPA candidate, Augustino ensures smooth coordination of financial and administrative functions to support City Engineering Co. Ltd towards its objectives. Collaborates closely with regulators and industry associations to stay abreast of emerging trends and best practices ensuring City Engineering excels administratively and financially.



Moses Mboya
Manager Environmental Services

Email: moses@cityengineering.co.tz

With a BSc in Environmental Science and Management, Moses leads the Environmental Services team at City Engineering Co., prioritizing sustainable practices and innovative solutions. His expertise in environmental standards, technical assessments, and project management has driven successful initiatives in land, water, and resource management. Committed to fostering climate resilience, Moses is dedicated to guiding the community towards a greener future.



Ms. Susan Wagner
Principal Socio-Economist

Email: info@cityengineering.co.tz

With over 25 years of professional experience, Susan Wagner is a sociologist who has worked as a social economist/community development and gender specialist in various projects. She has collaborated with several local and international engineering consulting firms in Tanzania and East Africa, carrying out socio-economic roles. Susan has taken part in several water supply and sanitation projects by conducting baseline studies, feasibility studies, and designing awareness campaigns for communities. She has also been involved in stakeholder consultations, environmental auditing studies, resettlement action plans, environmental social impact assessments, and social and environmental safeguards assessments in different sectors such as roads infrastructure, electrical power, water and sanitation, mining, and energy sectors in Tanzania. Her experience extends to working with international organizations such as the EU, EAC, UNDP, and World Bank. She played the role of a gender expert in the “Gender Study on Small Scale Mining in Tanzania” and contributed to developing the Community Engagement Framework for PPP Projects in Tanzania guidance tool, which aimed to provide practical guidelines for designing community engagement programs to Tanzanian Local Government Authorities and practitioners in the Public Private Partnerships (PPP) field.



Joseph Damian (PEng)
Manager Engineering Services

Email: joseph@cityengineering.co.tz

Joseph Damian is a proficient professional engineer with a passion for innovation and excellence. With a solid background in Civil Engineering. He brings extensive expertise and a proven track record of success to every project he undertakes.

Joseph Damian earned his Bachelor's degree in Science of Civil Engineering from University of Dar es salaam where he satisfied the requirements for the award of the Degree of Bachelor of Science in Civil Engineering and a keen interest in Design and Construction supervision. He continued his career practice and completing training of fulfillment of being registered as professional Engineer by Tanzania Engineers Registration Board (ERB).

With seven (7) years of experience in the construction industry, Joseph Damian has held key roles at prestigious companies such as Sumitomo Mitsui Construction Company and Multi-Tech Consults. As a Construction Manager he plans, monitor, control and oversees CECL projects from the designs.

Throughout his career, Joseph Damian has spearheaded numerous high-impact projects that have been completed in time and with quality.

Joseph Damian possesses a diverse skill set encompassing designs, construction management, project supervision and management, Quality Control and Assurance skills. He is proficient in Microsoft office, Microsoft project and AutoCAD and Engineering software. His strategic approach to problem-solving consistently delivers results.

Driven by a commitment to excellence, Joseph Damian approaches every project with a dedication to quality assurance, timely completion, innovation, and continuous improvement. He believes in team working, knowledge and skills sharing, creativity at work and professional integrity.

Outside of his professional pursuits, Joseph Damian enjoys watching engineering documentaries and reading engineering journals.

This biography serves as a testament to Joseph Damian's expertise, accomplishments, and commitment to making a positive impact in his field. Whether leading teams, solving complex challenges, or driving innovation, he consistently strives to exceed expectations and deliver exceptional results.



Ms. Martha Kamuzora
Chief Environmental Services

Email: info@cityengineering.co.tz

Martha Kamuzora has over 15 years of experience in safety and environmental management in the extractive sector. She holds a Master's in Water Resources Technology and Management and a Bachelor's in Environmental Engineering.

Martha has expertise in environmental compliance, HSE permitting, conflict resolution, waste management, and ESIA's. She has held leadership roles, enhancing her management and mentoring skills.

At Equinor Tanzania, she supported HSE planning and stakeholder engagement for drilling operations and the Tanzania LNG project. Her previous roles at Barrick Gold and Resolute Tanzania included HSE management, compliance monitoring, and CSR activities.



Eng. Niza Mwenesi
Ag Chief Operation Officer (Environmental services)

Email: info@cityengineering.co.tz

Niza is an Environmental Engineer and Projects Management Professional with over 17 years of experience in the extractive industry. He is registered with the National Environment Management Council to practice both Environmental Impact Assessments and Environmental Audits.

Niza has extensive experience in conducting environmental studies and audits, some of which have required adherence to local standards, IFC guidelines, or Equator Principles. Throughout his career, he has been involved in the complete life cycle of mining operations, from exploration and prospecting to mine closure. This comprehensive experience has earned Niza a distinguished position as one of the few Tanzanians to acquire such rare expertise.

As the Chief Operations Officer of Environmental Services, Niza plays a pivotal role in overseeing environmental studies to ensure QA/QC is maintained according to CECL and client-required standards.

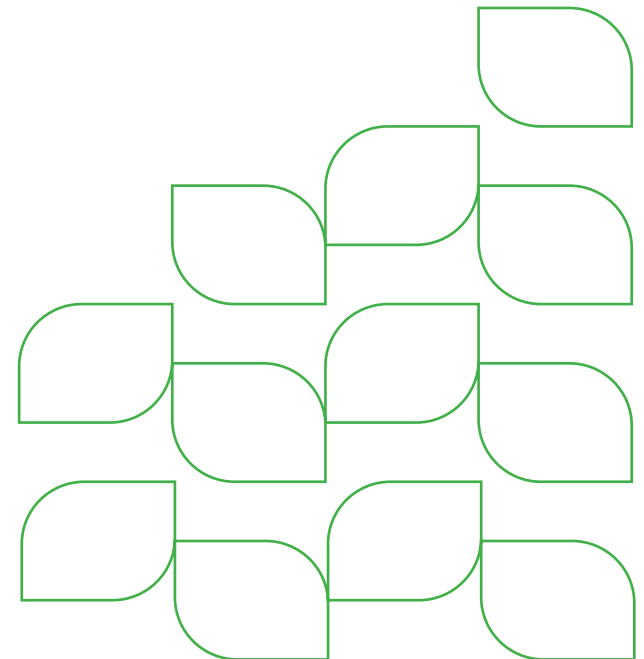


Dr. Onesmo Sigalla
Principal Hydrogeologist

Onesmo Zakaria Sigalla is a water sector expert with over 20 years of experience in WASH and IWRM. He holds a B.Sc in Geology and a Masters in IWRM from the University of Dar es Salaam and is completing a PhD in Hydrology and Water Resources Engineering. His research focuses on hydro-economic tradeoffs in hydrologic basins.

He has significantly contributed to community-led water management, creating guidelines for Water User Associations and community water supply organizations. He has led multi-stakeholder forums, reviewed policies, and initiated projects like the Equitable Payment for Watershed Services in Tanzania.

Onesmo's experience includes managing local and transboundary water projects, capacity building, and policy reviews. He has worked on the Nile River Basin Management Plan and the World Bank's hydroclimatic hazard management framework, with expertise in WASH, climate change adaptation, and community empowerment.



+ Project Portfolio

Engineering and Environmental Projects Undertaken

Project	Client
Assessment of the stability status for existing TSF at Buhemba Gold Mine using Standard Penetration Tests (SPT) and design remediation measures for re-using.	Buhemba Gold Co Ltd/State Mining Corporation (STAMICO).
Assessment of the stability status for existing TSF at Bulyanhulu Gold Mine using Standard Penetration Tests (SPT) and Cone Penetration test (CPT).	Barrick Gold Corporation.
Approved Professional Person for design, construction, and management of TSF at Geita Gold Mine.	Geita Gold Mine Ltd (AngloAshanti Gold).
Approved Professional Person for design, construction, and management of TSF at North Mara and Bulyanhulu Gold Mines.	Barrick Gold Corporation.
Design of TSF for fine slime storage at Williamson Diamond Mine.	Petra Diamond Ltd/Williamson Diamond Ltd.
TSF 1&2 seepages and leakages investigation and management at Golden Pride Project.	Acacia Mining Limited/Barrick Gold Corporation.
Design and construction supervision for TSF for Otter Mining CIP plant.	Otter Mining Limited.
Third Part TSF Operation Audit at Buzwagi Mines Project.	Acacia Mining PLC.
TSF 1&2 seepages and leakages investigation and management at Golden Pride Project.	Resolute Mining Limited.
TSF failure and environmental impact investigation and management in Nyarugusu, Geita.	Ferranti Processing Ltd and Nyarugusu Mines Ltd.
TSF design for Ferranti Processing Plant (Carbon-In-Pulp) operations.	Ferranti Processing Ltd and Nyarugusu Mines Ltd.
Design of Mine Closure Plan for Golden Pride Project (TSF, WRD, Pit and supporting facilities).	Resolute Mining Limited.
Post-closure rehabilitation, Monitoring and Management (until site relinquishment) for the golden pride project.	Resolute Mining Limited.
Environmental and Social Impact Assessment for development of Aga Khan University Campus in Arusha and Dar es salaam.	Aga Khan Foundation.

Engineering and Environmental Projects Undertaken

Project	Client
Environmental and Social Impact Assessment for construction of Telecommunication Towers Countrywide.	Ministry Of Defense and National Services.
Environmental and Social Impact Assessment for Nyakafuru Gold Project, Bukombe Geita.	Mabangu Mining Co Ltd.
Environmental Audit for deveryg solar energy power project at Mlandizi village, Mlela ward, Mvomero District, Morogoro.	Deveryg developing energy.
Initial Environmental Audit for existing kisarawe cement factory at mpuyani village, kazimzumbwi ward, kisarawe district, coast region.	Kisarawe Cement Co Ltd.
Annual Compliance Environmental Audit for Bulyanhulu Gold Mine Operations in Kahama Shinyanga 2014.	Bulyanhulu Gold Mine Ltd (Acacia/Barrick).
Environmental and Social Impact Assessment for High voltage transmission line and construction of substations Kigoma and Mpanda Regions (PROJECTS -LOT B & C).	TANESCO and Rural Energy Agency (REA).
Environmental and Social Impact Assessment for development of 12 health centers and dispensaries rehabilitation in Geita Region.	WaterAid and Amref (district councils in Geita region).
Environmental and Social Impact Assessment for Water supply sub-project from Ruvu river to Twyford Ceramics factory at pingo area in Chalinze Township.	Twyford (Tanzania) Ceramic Co Ltd (Geobay).
Environmental and Social Impact Assessment for development of A. 30kwp centralized solar electric generation and service line project for 14 villages located in Manyara, Tanga, and Arusha Regions.	E. On O Grid Solutions Gmbh (Raki Power).
Environmental and Social Impact Assessment for the proposed development of Bulyang'ombe Gold project, Ntobo Village, Ntobo Ward, Igunga District, Tabora Region.	NMDC Ltd.
Environmental and Social Impact Assessment for Washing Powder factory Kibaha, Coast Region.	Prance International Co. Ltd.
Environmental Impact Assessment for the development of emurtoto intake in Arusha national park, Arusha region.	Water Aid
TANCOAL Mine Closure Plan Development.	TANCOAL Energy Ltd
Stack Emissions Monitoring 2018 and 2020 At Bulyanhulu Gold Operations.	Bulyanhulu Gold Mine Ltd
Environmental Impact Assessment for existing quarrying of aggregates for Tansino Quarries, at Lugoba, Chalinze district, Pwani.	Tansino Quarries Limited
Environmental Impact Assessment for the proposed development of 50MW Solar energy power plant located at Kitapilimwa village, kihwele ward and 24.5km transmission line in Iringa rural district.	T. Resources Company Ltd

Engineering and Environmental Projects Undertaken

Project	Client
Supply and installation of substations, medium and low voltage lines, transformers and connection of customers in an – electried rural areas in Tanzania under rural electrification on a turnkey basis.	Rural Energy Agency
Environmental Impact Assessment for six water schemes planned for rehabilitation and expansion in Kigoma Region.	Enabel - The Belgian Development Agency
Environmental and Social Impact Assessment (ESIA) for the proposed production of construction chemical materials–admixture & mortal on plot 135, Mbezi industrial area In Salasala Ward, Kinondoni Municipality in Dar Es Salaam Region.	SIKA Construction Chemicals
Due Diligence assessment/Report.	SIKA Construction Chemicals
Annual Environmental Audit for the production of construction chemical materials–admixture & mortal on plot 135, Mbezi industrial area In Salasala Ward, Kinondoni Municipality in Dar Es Salaam Region.	SIKA Construction Chemicals
Annual Environmental Audit 2019,2020 at New Luika Gold Mine.	Shanta Mine Company Limited
Environmental and Social Impact Assessment for the proposed development of Buhemba Gold Mine Located in Biatika Village, Buhemba Ward, Butiama District, Mara Region.	Buhemba Gold Company Ltd.
2020 - Annual Environmental Audit for Mwakitolyo Gold Mine Shinyanga Region.	Zem Development (T) Co.Ltd.
Environmental Impact Assessment for installation of Incinerator for treatment of waste at Geita Gold Mining Limited.	Anglo Gold Ashanti – Geita Gold Mine Ltd.
Environmental Impact Assessment for the proposed development of Gold Renery Plant to be located at Block’’ A’’, Butuja Street in Ilemela Ward, Ilemela Municipality Mwanza Region.	Mwanza Precious Metals Renery Co.Ltd.(MPMR).
Environmental and Social Impact Assessment for Proposed development of porcupine south mine pit located in Makongolosi, Mkola Wards, Chunya District, Mbeya Region, and Haul Road from Mkola to New Luika Gold Mine located in Saza Ward, Songwe District, Songwe Region.	Shanta Mining Co.Ltd.
WaterAid - Installation Of E- Meter in Babati district.	Water Aid.
Automatic Weather Station - Calibration (AWS) at Geita Gold Mine.	Anglo Gold Ashanti – Geita Gold Mine Ltd.

Engineering and Environmental Projects Undertaken

Project	Client
Automatic Weather Station Calibration (AWS) at Buzwagi Gold Mine.	Buzwagi - Pangea Minerals Ltd.
Automatic Weather Station Calibration (AWS) at Bulyanhulu Gold Mine.	Bulyanhulu Gold Mine Ltd (Barrick).
Construction and instillation of storm water management facilities and infrastructures.	
Construction supervision QAQC and preparation for construction report and as-built drawings	Mantra
EMP update for new TSF Construction and mini operation	Williamson Diamonds Ltd
Supervision of TSF as approved professional person (APP) as well as supervising construction of TSF expansion project.	Geita Gold Mine Ltd
Approved professional person (APP)TSF	Bulyanhulu Gold Mine Ltd
Provision of small tailings storage facility design for Nachu Graphite Mine project.	Uranex Tanzania Limited
Design storm water dam(SWD1)	Uranex Tanzania Limited
TSF Construction supervision and QAQC	Williamson Diamonds Ltd
Bore hole drilling and supervision costs	Williamson Diamonds Ltd
FRS Design (Extension)	Williamson Diamonds Ltd
WaterAid - Installation of - Meter	Water Aid
Installation and calibration of the automated weather monitoring stations	Anglo Gold Ashanti - GGM Ltd-2017
Installation and calibration of the Automated Weather Monitoring Stations	Anglo Gold Ashanti - GGM Ltd-2017

Local And International Partners

We are establishing strategic and solid relationships with other specialist consulting companies to provide the full range of consulting environmental and engineering services. We partner in baseline studies, design and construction management projects and joint ventures that range in size from large international players to niche market specialists. For far we have form project joint venture with the following companies.



ARTELIA



ERM



SGS



NORPLAN 
Consulting Engineers and Planners



GEOLABS®



WSP



OSIMO

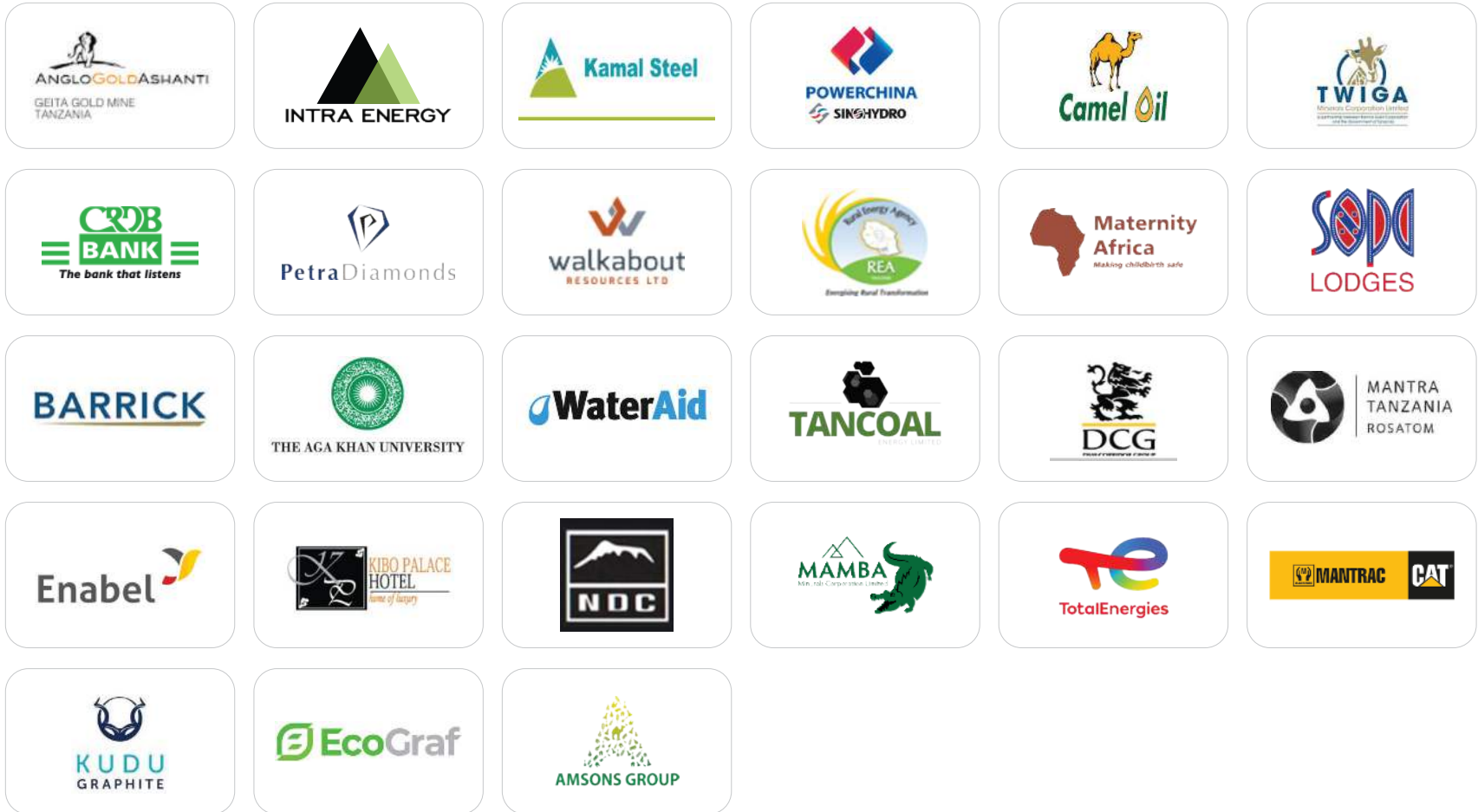


SLR



Jones & Wagener
Engineering & Environmental Consultants

+ Our Clients





Linking People, Protecting Environment.



Mikocheni Light Industrial Area, Coca Cola Road
Plot 80, AS Mwamba Building, 6th Floor
P.O.Box 71341 Dar es Salaam, Tanzania
Mob: +255 754 620 390
Tel: +255 760 400 800