



# COMPANY PROFILE



# CONTENT

**01** **TITLE HERE**  
Realizing Competitiveness and Industrialization for Human Development in Tanzania.

**04** **TITLE HERE**  
Realizing Competitiveness and Industrialization for Human Development in Tanzania.

**06** **TITLE HERE**  
Realizing Competitiveness and Industrialization for Human Development in Tanzania.

**09** **TITLE HERE**  
Realizing Competitiveness and Industrialization for Human Development in Tanzania.

**18** **TITLE HERE**  
Realizing Competitiveness and Industrialization for Human Development in Tanzania.

**01** **TITLE HERE**  
Realizing Competitiveness and Industrialization for Human Development in Tanzania.

**04** **TITLE HERE**  
Realizing Competitiveness and Industrialization for Human Development in Tanzania.

**06** **TITLE HERE**  
Realizing Competitiveness and Industrialization for Human Development in Tanzania.

**09** **TITLE HERE**  
Realizing Competitiveness and Industrialization for Human Development in Tanzania.

**18** **TITLE HERE**  
Realizing Competitiveness and Industrialization for Human Development in Tanzania.



**CECL**

ENVIRONMENTAL AND  
ENGINEERING CONSULTING  
[www.cityengineering.co.tz](http://www.cityengineering.co.tz)

## MESSAGE FROM THE CEO

Last year, we celebrated our 10th anniversary by recording our strongest year ever. The pivotal moment showcased our resilience in the face of global uncertainty, emphasizing the enduring importance of environmental sustainability in shaping decisions that businesses make around the world.

### A Decade of Triumphs

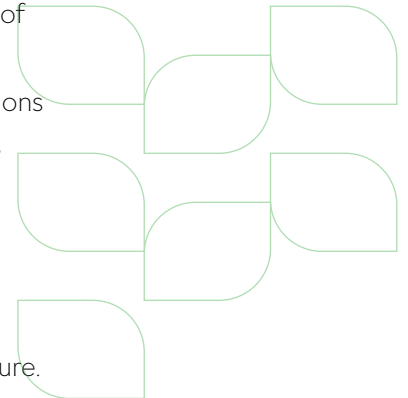
I founded CECL in 2013 and since then CECL has evolved into the epitome of engineering and environmental prowess, recognized as the go-to Tanzanian firm for designing, constructing, and managing diverse environmental and civil engineering projects. Our success is measured not just in accomplishments but in the transformative impact on industries and communities alike.

### Seizing Opportunities Amid Challenges

When facing challenges, CECL consistently turns adversity into opportunities for growth. The Local Content Regulations of 2018 have been a cornerstone of our progress, enabling significant contributions to local communities. Initiatives such as mentorship, career development programs, and our recently launched two-year training and development program showcase our dedication to nurturing a skilled workforce for the future.



**Anael Macha**  
CEO, CEng, and APP



### Pillars of Excellence for a Prosperous Future

Looking ahead, guided by the pillars of Organisational Leadership, Market Leadership, and Technology Leadership, CECL is committed to unlocking new realms of success and impact. Investing in our greatest asset – our people – is paramount. The establishment of a Training and Development Unit, a Leadership and Management Program, and a Human Resource Unit underscores our belief in empowering our workforce.

### Leveraging Technology for Excellence

In a rapidly evolving world, staying ahead requires embracing innovation. CECL's focus on processes involves harnessing cutting-edge technology to enhance efficiency, streamline operations, and elevate service delivery. Already a market leader in Tanzania in the adoption of cutting-edge technologies, we will maintain this course as a key driver of our success.

### Prospects for Growth: Beyond Borders and Financial Horizons

CECL's vision extends beyond Tanzanian borders. Our objectives to expand operations to neighboring nations, develop regional partnerships, and acquire new clients testify to our ambition to become a regional player. We understand the importance of global standards while remaining rooted in our local context, ensuring sustainable growth aligned with international benchmarks.

### Together, Towards a Future of Shared Success

As we embark on the next chapter, I extend heartfelt gratitude to our valued clients, esteemed partners, and the incredible CECL team. Your unwavering trust is the cornerstone of our success, and together, we are poised to achieve new heights. CECL is not just a company; it's a community of visionaries creating a future where growth knows no bounds, impact resonates, and careers flourish with purpose.

Thank you for being an integral part of the CECL story.

Warm regards,

Anael Macha  
CEO



ENVIRONMENTAL AND  
ENGINEERING CONSULTING  
[www.cityengineering.co.tz](http://www.cityengineering.co.tz)

# 2

SECTION

## MEET CECL



ENVIRONMENTAL AND  
ENGINEERING CONSULTING  
[www.cityengineering.co.tz](http://www.cityengineering.co.tz)

**MEET CECL**

CECL emerged in 2013 as a visionary initiative driven by a passion for delivering unparalleled engineering and environmental services. Founded by forward-thinking leaders who recognized the growing need for a comprehensive consulting firm, CECL has since evolved into a pioneering force in Tanzania.

**Our Footprint**

Headquartered in Dar Es Salaam, CECL operates with a strategic presence, catering to the Tanzanian market across all regions. Our commitment to excellence has positioned us as a key player in the engineering and environmental consulting landscape. CECL's more than 50 dedicated professionals provide a wide array of services guaranteeing strict adherence to environmental and engineering compliance standards.

**Unwavering Dedication**

At the heart of CECL's success is an unwavering dedication to engineering and environmental excellence. The past decade has been defined by triumphs, marked by transformative projects that showcase our commitment to innovation, sustainability, and client satisfaction.

**Adapting to Challenges**

Challenges are viewed as opportunities for growth at CECL. We've successfully navigated regulatory landscapes, turning challenges into catalysts for progress. Initiatives such as professional talks, career development programs, and our two-year training and development program underscore our commitment to building a skilled workforce for the future.

**Engineering Solutions That Transform**

CECL has become synonymous with designing, constructing, and managing cutting-edge environmental and civil engineering projects. We take pride not just in our accomplishments but in the positive impact we've had on companies and communities.



### Pillars of Excellence

Guided by three strategic pillars – Organisational Leadership, Market Leadership, and Technology Leadership – CECL is committed to unlocking new realms of success and impact. Our focus on processes involves harnessing cutting-edge technology to enhance efficiency, streamline operations, and elevate service delivery.

### Prospects for Growth

CECL's vision extends beyond borders. With objectives to expand operations to neighbouring nations, develop regional partnerships, and acquire new clients, we aspire to become a regional powerhouse. Our commitment to global standards ensures sustainable growth aligned with international benchmarks.

### Join the CECL Community

**CECL is not just a company; it's a community of visionaries. As we embark on the next phase of our journey, we invite you to be part of our story. Together, we will create a future where growth knows no bounds, impact resonates far and wide, and careers flourish with purpose.**

#### REGISTRATIONS:

Registered in Tanzania and 100% owned by Tanzanians.

BRELA - certificate No 50109.

NEMC - No. NEMC/EIA/OO32 and NEMC/EA/OO12.

ERB as Consulting firm - No. Reg No. 233

Registered by the Department of Water Resources in the Ministry of Water as a firm with Approved professional Persons (APP).

#### MEMBER OF:

Tanzania Chamber of Mines, the American Chamber of Commerce in Tanzania, UN Global Compact Initiative.

#### PROFESSIONS:

Environmental Engineering, Geotechnical, Water Resources, Highway Engineering, Structural Engineering, Construction Management, Hydrology, Hydrogeology, CAD, Environmental Planning, Sociology, Business Management, ICT, Procurement, Documents, Accounts, etc.

#### CERTIFICATIONS:

Consulting Engineers, Professional Engineers, Graduate Engineers.

NEMC

## COMPANY PHILOSOPHY:

At CECL, our philosophy is an evolving tapestry woven with engineering mastery, environmental stewardship, and a profound commitment to positive impact. We see our role not just as builders but as storytellers, crafting narratives of sustainability that resonate in communities and echo through generations.

Guided by core values of teamwork, innovation, quality, integrity, and personal growth, CECL's leadership fosters a culture that not only upholds high technical standards but also prioritizes ethical conduct, environmental responsibility, and collaborative teamwork. CECL envisions a future where its projects stand as symbols of sustainable progress, embodying a philosophy that seamlessly integrates engineering expertise with a profound commitment to social and environmental responsibility.

### VISION:

We envision a sustainable world through engineering and design excellence.

### MISSION:

Advancing society through civil and environmental engineering underpinned by a steadfast commitment to quality.

### VALUES:

- Teamwork:** We maintain the highest standards to exceed expectations.
- Innovation:** We work together towards common goals.
- Quality:** We are open to trying new ways and ideas to improve results.
- Integrity:** We follow principles and do what is right even when it is difficult.
- Personal Growth:** We are continually growing to become the best versions of ourselves.





## BUSINESS AREAS

### MINING

1. Tailings Storage Facilities (TSF) Engineering:
2. Waste Management Solutions:
3. Hydrologic and Hydraulic Modeling:
4. Geotechnical Investigations:

### ENERGY

1. Strategic Advisory and Due Diligence:
2. Sustainability and Compliance Management:
3. Engineering Excellence and Project Execution:
4. Comprehensive Project Lifecycle Services:

### BUILT ENVIRONMENT

1. Transformative Real Estate Development:
2. Urban Planning and Design:
3. Landscape Mastery:
4. Navigating Real Estate Landscape:

### WATER RESOURCES

1. Holistic Water Management Solutions:
2. Water Resources Engineering:
3. Irrigation Excellence:
4. Flood Control and Infrastructure Safety:

### TOURISM

1. Eco-friendly Resorts
2. Tourist Destination Planning
3. Heritage Site Preservation
4. Sustainable Infrastructure Development

### AGRICULTURE

1. Precision Farming Solutions
2. Irrigation Infrastructure
3. Sustainable Crop Practices
4. Agribusiness Development

### MANUFACTURING

1. Sustainable Industrial Parks
2. Green Manufacturing Initiatives
3. Waste Management in Manufacturing
4. Energy-Efficient Factories

### FINANCIAL

1. Investment Due Diligence
2. Sustainability Advisory
3. Risk Management Solutions
4. Economic Feasibility Studies

## SCOPE OF WORK

### Planning Stage:

- Project Development and Planning
- Master Plan Development
- Preliminary Feasibility Study
- Feasibility Study
- Economic Analysis
- Financing Planning
- Construction Methods Optimization
- Strategic Environmental Impact

### Assessment Stage:

- PPP Project Consulting
- Advisory for Construction Engineering

### Operation & Maintenance Stage:

- Safety Inspection
- Technical Inspection for Infrastructure
- Advisory for Operation & Management

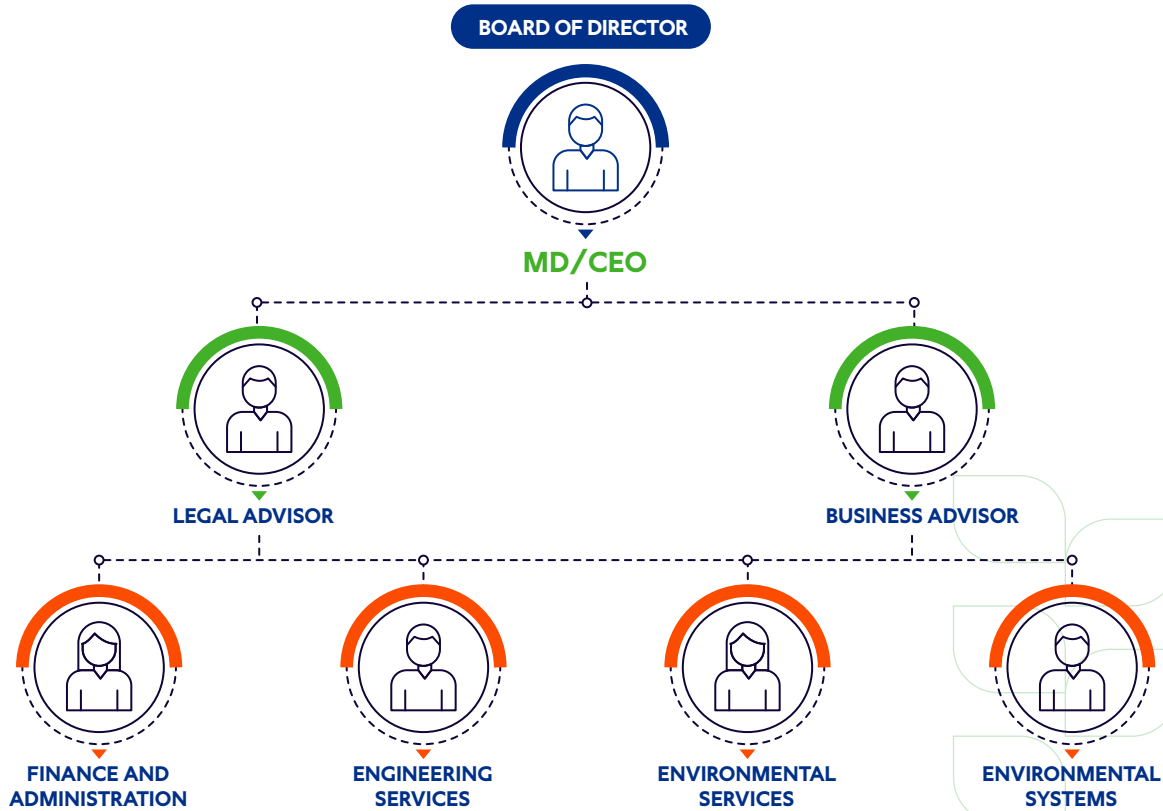
### Design Stage:

- Basic and Detailed Design
- Design for Design-Build Project
- Design for PPP Project
- Design Verification
- Social Impact Assessment
- Environmental Impact Assessment
- Disaster Prevention Planning

### Construction Stage:

- Construction Supervision & Management
- Post-Construction Environmental Impact Survey

COMPANY STRUCTURE





3  
SECTION

SOLUTIONS



ENVIRONMENTAL AND  
ENGINEERING CONSULTING  
[www.cityengineering.co.tz](http://www.cityengineering.co.tz)

## SOLUTIONS :

### 1. WATER RESOURCES

At City Engineering Company Limited (CECL), we recognize the vital role water resources play in shaping communities and ensuring a sustainable future. With a proven track record in the successful implementation of numerous large-scale projects, CECL is at the forefront of comprehensive water resources solutions. Our commitment extends beyond project execution; we strive to enhance the quality of life by developing limited water resources and mitigating water-related natural disasters such as floods and droughts.

#### Water Resources Development and Management

CECL has been a driving force in the successful execution of water resources projects, covering diverse areas such as river training, dam construction, disaster prevention, and more. Our detailed designs ensure a meticulous approach to every project, fostering innovation and efficiency.

#### Agricultural and Irrigation System

CECL has actively participated in agricultural development projects that aim to improve living environments by creating essential agricultural production facilities. From irrigation dams to farmland development, our outstanding technologies contribute to sustainable increases in agricultural productivity worldwide.

#### Water Supply and Sewage System

CECL's focus on water supply extends to producing clean water through advanced facilities. Simultaneously, our expertise in wastewater treatment ensures the collection and treatment of wastewater from households and factories. Our specialised team has the expertise required to undertake the planning, design and management of both urban and rural water supply projects, and wastewater and sewerage handling systems. We deliver sustainable, integrated solutions that are practical and effective.

### Groundwater Management and Hydrogeology

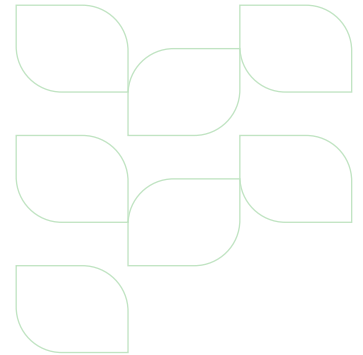
CECL's professional teams of geologists, hydrogeologists, and geochemists bring extensive experience to groundwater projects. From pre-feasibility to feasibility and Environmental Impact Assessment (EIA) studies, we cover all aspects of groundwater studies. Our services encompass geophysical surveys, pollution evaluation, remediation design, and groundwater modeling for various applications, including mining and landfill projects.

#### WHAT WE CAN DO FOR YOU

- Professional investigations in hydrology and hydraulics
- Water quality investigations and modeling
- Optimization of water usage and supply systems
- Stormwater management and acid rock drainage
- Dam design and safety inspections

### Surface Water Hydrology, Management, and Engineering

CECL's approach to surface water involves effective management and development aligned with statutory requirements and commercial needs. Our team of engineers and scientists offers a comprehensive range of services, including planning and analysis of river catchments, water resource development, and stormwater control measures. We employ specialist software to optimize water usage and design decision-support systems for expert advice.



### TOWARDS A SUSTAINABLE FUTURE

CECL's water resources solutions represent a commitment to innovation, sustainability, and community well-being. Whether it's managing groundwater, optimizing surface water, or contributing to agricultural development, we bring a wealth of experience to create lasting impacts. Partner with CECL for water solutions that create a future where water resources are harnessed for the prosperity of communities and the environment.





## 2. SUSTAINABLE SOLID AND LIQUID WASTE MANAGEMENT SOLUTIONS

At CECL, our commitment to environmental stewardship extends to comprehensive Solid and Liquid Waste Management solutions. Our waste management team is composed of environmental engineers, scientists, and technical specialists, all equipped with extensive knowledge of waste management practices. With a focus on delivering practical and pragmatic solutions, our team navigates the complexities of the waste industry with ease.

### Waste Management Expertise

CECL recognizes that waste management is a critical intersection of public service and commercial operation. Striking a balance between cost-effectiveness, practicality, and positive outcomes for stakeholders, communities, and the environment is at the core of our waste management philosophy.

### Integrated Waste Management Plans

CECL excels in developing Integrated Waste Management Plans tailored to meet the unique needs of each project. Our expertise extends to waste management logistics, ensuring the seamless execution of plans from inception to implementation.

### Waste Management Feasibility Studies

We conduct comprehensive feasibility studies, providing insights into the viability and potential challenges of projects. Our approach involves a thorough analysis that considers environmental impact, community considerations, and regulatory compliance.

### Landfill Master Planning and Design

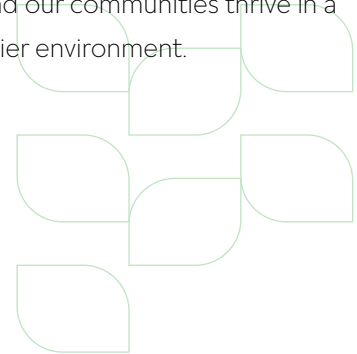
CECL takes a holistic approach to landfill management, offering master planning and design services. This includes synthetic liner design and performance modeling, leachate collection system design, stormwater control and management, landfill gas assessment and management, and regulatory compliance monitoring.

### Wastewater Treatment Facility Master Planning and Design

In the realm of wastewater management, CECL stands out with master planning and design services for wastewater treatment facilities. Our capabilities include the analysis of wastewater quality, design of domestic/sewerage and industrial wastewater treatment facilities using advanced models like the WEST Model, and ongoing monitoring to ensure optimal performance.

### Towards a Cleaner and Sustainable Future

CECL's Waste Management Solutions embody our dedication to creating a cleaner and more sustainable future. Partner with CECL for innovative waste management solutions that not only meet regulatory standards but also contribute to the broader goal of environmental sustainability. Together, let's build a future where waste is managed responsibly, and our communities thrive in a cleaner, healthier environment.



### 3. ENVIRONMENTAL CONSULTING

CECL stands at the forefront of environmental solutions, driven by a commitment to balance rapid development with environmental preservation. Our team of experienced specialists tackles diverse challenges across water, air, waste, and noise domains.



## ENVIRONMENTAL PLANNING AND IMPACT ASSESSMENT

CECL boasts extensive experience in all facets of Environmental Impact Assessment (EIA), delivering project approvals under commonwealth and national/local government processes. Registered by NEMC, our team is empowered to undertake EIA and Environmental Audits. We manage and contribute to assessments on projects across East Africa, ensuring compliance with conditions of approval and facilitating project development from planning to decommissioning.

### Comprehensive Services:

- **Environmental Impact Assessment (EIA):** From project feasibility to decommissioning, CECL guides clients through compliant development, managing and contributing to assessments across East Africa.
- **Impact Assessment & Mitigation:** We support the planning, assessment, and delivery of projects with expertise in ecological assessment, baseline surveys, offset assessments, and expert witness services.
- **Compliance & Auditing:** With certified lead auditors on board, CECL helps organizations achieve compliance, navigate complex obligations, and minimize risks through environmental and compliance audits.
- **Stakeholder & Social Management:** CECL excels in engaging communities, conducting consultations to understand local needs, assess impacts, and build consensus on mitigation options. We also provide expertise in resettlement action plans.

### Specialized Services:

- **Air Quality Strategies & Audits:** CECL assists in developing and implementing robust air quality strategies, leveraging advanced tools and independent audits to minimize operational and financial impacts.
- **Strategic Communications & Stakeholder Engagement:** CECL recognizes the importance of non-technical risks and helps clients develop effective stakeholder engagement strategies through strategic communications, outreach, and research.
- **Sustainability Reporting & Strategy:** We partner with clients to define and deliver impactful corporate sustainability strategies, reports, and disclosures that drive business performance and meet stakeholder expectations.
- **Due Diligence:** CECL supports investors and corporations in uncovering opportunities and mitigating risks by providing comprehensive EHSS due diligence during mergers and acquisitions or any other engagement.



At CECL, we link people to the environment,  
ensuring a harmonious balance between  
development and environmental preservation.  
Join us on the journey to a cleaner, greener, and  
more sustainable future.



#### 4. CONSTRUCTION MANAGEMENT AND SUPERVISION

Welcome to CECL, where we redefine construction management and supervision with a perfect blend of professionalism and engagement. Our commitment is simple: to optimize value, deliver superior workmanship, and manage every aspect of your construction project seamlessly.



ENVIRONMENTAL AND  
ENGINEERING CONSULTING  
[www.cityengineering.co.tz](http://www.cityengineering.co.tz)

### Unleashing Engineering Prowess

At CECL, our team of exceptional engineers brings a wealth of expertise to the construction landscape. We go beyond the basics, utilizing cutting-edge technology to transform project planning, engineering design, and execution into an art form. Acting as your trusted partners, we ensure that every detail is not just handled but handled with excellence.

### Value Redefined

Unlock unparalleled value with CECL. Our approach combines technological innovation and seasoned professionals to cut project costs, shorten timelines, and elevate quality. We don't just meet expectations; we exceed them, ensuring our clients get exceptional value for their investments.

### Swift Solutions for Lasting Results

CECL is your go-to for rapid and accurate remedial solutions. Detecting physical and functional defects swiftly, we employ smart technologies to ensure safety and disaster prevention throughout the life cycle of your facilities. We're not just solving problems; we're future-proofing your investments.

### Smart Construction

Our commitment to excellence extends to integrating smart technologies for enhanced safety. Beyond conventional supervision, we proactively prevent safety risks and disasters. With CECL, your facilities are not just constructed; they are fortified for a safe and resilient future.

**Choose CECL as your construction partner and experience a new era of project execution. We bring together expertise, technology, and unwavering dedication to build a future that not only meets your vision but exceeds it. With CECL, construction excellence is not just a promise; it's our commitment to your success.**



ENVIRONMENTAL AND  
ENGINEERING CONSULTING  
[www.cityengineering.co.tz](http://www.cityengineering.co.tz)



## 5. ENGINEERING SOLUTIONS

Welcome to CECL, where we don't just build; we engineer solutions that stand the test of time. Our Civil Engineering solutions redefine infrastructure, and at the heart of it are our unparalleled services in engineering design.



### Roads and Highways

CECL takes pride in shaping the lifelines of nations through our Roads and Highway Engineering expertise. From meticulous planning to flawless execution, we pave the way for seamless connectivity. Your journey begins with us.

### Topographical Surveys

CECL goes beyond the conventional with Topographical Surveys. Whether on the ground or from the aerial view, we capture every contour with precision. Our surveys provide the insights needed to transform landscapes into architectural symphonies.

### Buildings Structural Design

In the realm of structural design, innovation is our cornerstone. CECL brings to life buildings that not only defy gravity but stand tall as architectural marvels. We monitor every pulse of the construction, ensuring that your vision materializes with precision.

### Unmatched Expertise

CECL stands at the forefront of civil engineering, bringing unmatched expertise to every project. Our commitment goes beyond conventional norms; we aim for excellence in every aspect of planning, design, construction, and commissioning.

### Geotech

Digging deep into the science of soil, CECL masters the art of Geotech. We understand that a solid foundation is the essence of every structure. Our geotechnical solutions ensure stability, durability, and the resilience to weather any storm.

**Partner with CECL, and witness your vision seamlessly transform into reality. We don't just construct; we engineer experiences, redefine landscapes, and shape the future.**  
**CECL – where innovation meets infrastructure.**

**4**  
SECTION

**SECTORS:**



ENVIRONMENTAL AND  
ENGINEERING CONSULTING  
[www.cityengineering.co.tz](http://www.cityengineering.co.tz)

**SECTORS :****1. MINING**

**CECL: Leading the Mining Frontier.**

**In the mining sector, CECL stands as a beacon of innovation, with Tailings Storage Facilities (TSF) taking center stage in our comprehensive suite of solutions.**

### Tailings Storage Facilities (TSF)

At CECL, TSF is not just a product; it's our engineering mastery showcased at every phase – from meticulous design and construction to efficient operation and responsible closure. Our expertise encompasses seepage and stability analysis, liner design, and advanced geometric modeling, setting industry benchmarks.

### Waste Rock Dump

CECL redefines waste management with sustainable Waste Rock Dump solutions. Our approach integrates innovative design, construction, and closure practices, aligning environmental stewardship with operational efficiency.

### Hydrologic and Hydraulic Modeling

Navigating the complexities of water dynamics in mining sites, our Hydrologic and Hydraulic Modeling expertise includes detailed analysis of river flows, runoffs, catchment characteristics, and flood risk assessments. We bring precision to TSF water balance and mine site water equilibrium for sustainable and safe operations.



### Geotechnical Investigations

CECL conducts SCPTu tests in TSF dams and SPT tests in mine sites, ensuring a thorough understanding of soil composition. Our geotechnical investigations contribute to overall stability, enhancing the safety of mining infrastructure.

CECL is your partner in transforming the mining landscape. TSF represents our commitment to engineering mastery, seamlessly integrating precision engineering with environmental consciousness. Partner with us for mining solutions that set industry standards, where every project is a testament to excellence, sustainability, and safety.



## 2. ENERGY

In the dynamic landscape of the energy sector, CECL is emerging as a pivotal force, bringing a decade of successful experience and a commitment to powering the future. We partner with energy clients, offering comprehensive services that span the entire project lifecycle.

### Strategic Advisory and Due Diligence:

CECL excels in providing meticulous due diligence and economic appraisal, ensuring informed decision-making, and maximizing the financial viability of energy projects.

### Engineering Excellence and Project Execution:

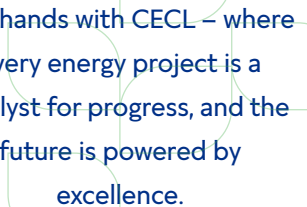
Leveraging our engineering prowess, we optimize the design and execution of energy infrastructure projects, enhancing operational safety, production efficiency, and overall project feasibility.

### Sustainability and Compliance Management:

Navigating the regulatory landscape is a strength at CECL. Our experts handle permitting and compliance seamlessly, ensuring adherence to industry standards and sustainability goals.

### Partnering for a Sustainable Future

CECL goes beyond conventional energy services; we foster partnerships that transcend project boundaries. By identifying opportunities, delivering measurable improvements, and realizing value, we empower our clients to navigate a future where energy meets efficiency, sustainability, and innovation.



Join hands with CECL – where every energy project is a catalyst for progress, and the future is powered by excellence.

### 3. BUILT ENVIRONMENT

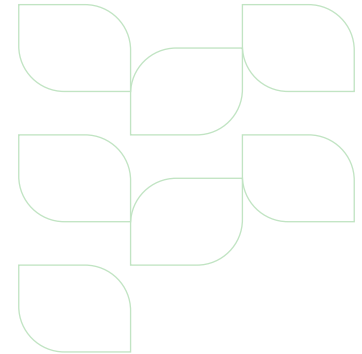
In the realm of natural and built environments, we understand that every project, regardless of size, can wield significant influence. From addressing the minutiae of smaller projects to orchestrating the intricacies of large-scale strategies, our team is finely tuned to deliver transformative outcomes. We navigate the planning, design, and development processes with precision, ensuring successful results and impactful contributions to the communities we serve.

#### Unleashing Sustainable Development

Our collaborative ethos across disciplines positions us uniquely to unlock the potential of real estate projects, adding value and bringing forth truly sustainable places that contribute to the well-being of society. At CECL, Making Sustainability Happen is not just a slogan; it's a guiding principle.

#### Urban Planning and Design

In the realm of urban planning and design, CECL is a dynamic participant in the development of eco-friendly and sustainable spaces. Our extensive experience and exceptional human resources drive our involvement in projects ranging from new towns and housing complexes to industrial and logistics centers. We employ a strategic approach to ensure that every development aligns with environmental best practices.





### Landscape Mastery

CECL's landscape services cater to a diverse range of needs. From concept designs and feasibility studies to planning, landscape designs, and authorities' approval procedures, we cover it all. Our projects span a spectrum, including tourist destinations, parks, golf courses, ski resorts, amusement parks, theme parks, arboretums, forest lodges, waterfronts, and exhibition grounds. Each endeavor reflects our commitment to creating environments that harmonize with nature.

### Navigating the Real Estate Landscape

CECL excels in critical aspects of real estate development, including planning, zoning, entitlements, and project management. Our comprehensive services ensure that every project unfolds seamlessly, adhering to the highest standards of quality, sustainability, and societal benefit. In shaping tomorrow's real estate landscape, CECL combines expertise, innovation, and a profound understanding of the intricacies involved. Join us on this journey where every development is a testament to sustainable progress and a better tomorrow.

## 4. WATER

At CECL, water is not just a resource; it's a commitment to communities and clients alike. Our comprehensive suite of services includes consulting, design, engineering, and advisory services. Our holistic approach addresses the diverse needs of our water-based clients, ensuring the delivery of innovative solutions that stand resilient against climate change, bolster supply infrastructures, and promote sustainable water management.

### Water Resources

In this unit, we craft new systems and equipment to efficiently manage water resources. Our expertise spans various areas, including the design of water treatment facilities, harnessing underground wells, and tapping into natural springs. Whether in rural or urban watersheds, our focus remains on the judicious use and management of land and water resources.

### Irrigation Excellence

Irrigation is a pivotal component of our water-centric endeavors. We define it as the controlled application of water to croplands, aiming to establish an optimal soil moisture regime that maximizes crop production while minimizing environmental degradation. Our commitment to well-irrigated crops extends beyond mere production; it's about fostering sustainable agricultural practices that yield more food while respecting the delicate balance of the environment.

### Flood Control and Infrastructure Safety

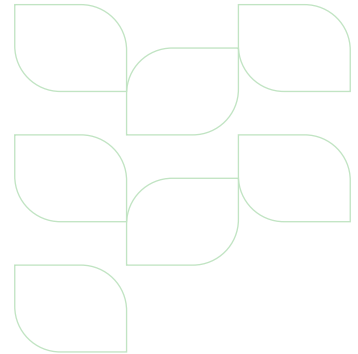
CECL strategically implements measures to mitigate flood impacts, ensuring the safety of communities and infrastructure. Our approach combines expertise and innovation to create resilient solutions.

### Efficient Water Conveyance with Aqueducts

In the domain of aqueducts, CECL designs and manages water conveyance structures, facilitating the efficient transport of water. Our solutions prioritize sustainability and effectiveness.

### Reliable Water Supply and Drainage Systems

CECL is dedicated to ensuring reliable water supply and crafting efficient networks through canals and drainage systems. Our focus on proper water management enhances community well-being and minimizes environmental impact.





Our commitment to sustainable water and waste management reflects our vision for a water-centric future that sustains communities and ecosystems alike.





**5**  
SECTION

**PARTNERS  
AND CLIENTS**



ENVIRONMENTAL AND  
ENGINEERING CONSULTING  
[www.cityengineering.co.tz](http://www.cityengineering.co.tz)



# OUR CLIENTS

## OUR PARTNERS LOCATIONS:





**OTHER IMPORTANT SECTORS:**

1. Tourism
2. Agriculture
3. Manufacturing
4. Telecoms/ICT
5. Financial



Welcome To:



ENVIRONMENTAL AND  
ENGINEERING CONSULTING  
[www.cityengineering.co.tz](http://www.cityengineering.co.tz)





CITY ENGINEERING CO.LTD  
6th Floor Shamo Tower Mbezi Beach,  
P.O. Box 71341, Dar es Salaam,  
Tanzania.

[www.cityengineering.co.tz](http://www.cityengineering.co.tz)